

No money, no equipment.... just volunteers and an area 66' wide, stretching from County E to the edge of the hardwoods was allocated for Horticulture.

1991-1992

Memories from 1991 are of many rock picking outings and quack grass digging parties!



1992 First trial: **Tomatoes**
Over 100 varieties were planted



Permanent signage installed.

1993– 1997

Raised veggie beds put in place.

First equipment shed was built.

Until 1997 all water was carried to Harmony in jugs.
Then Waste Management permitted use of their well.





1998

Shade structure was built.



2000

A well was drilled and water lines trenched to provide water for drinking and watering plants in the demonstration garden.



Utilizing a grant from the Natural Resources Conservation Service, a 17 acre demonstration prairie was installed. WDNR staff have completed several prescribed burns to maintain the parcel as prairie.



2001-2003

Fruit tree orchard installed.

Using mostly volunteer labor, the Marinette County Land & Water Conservation led the construction of the Pavilion.

Sign by County E installed.

Commercial electricity was run to well and shed.

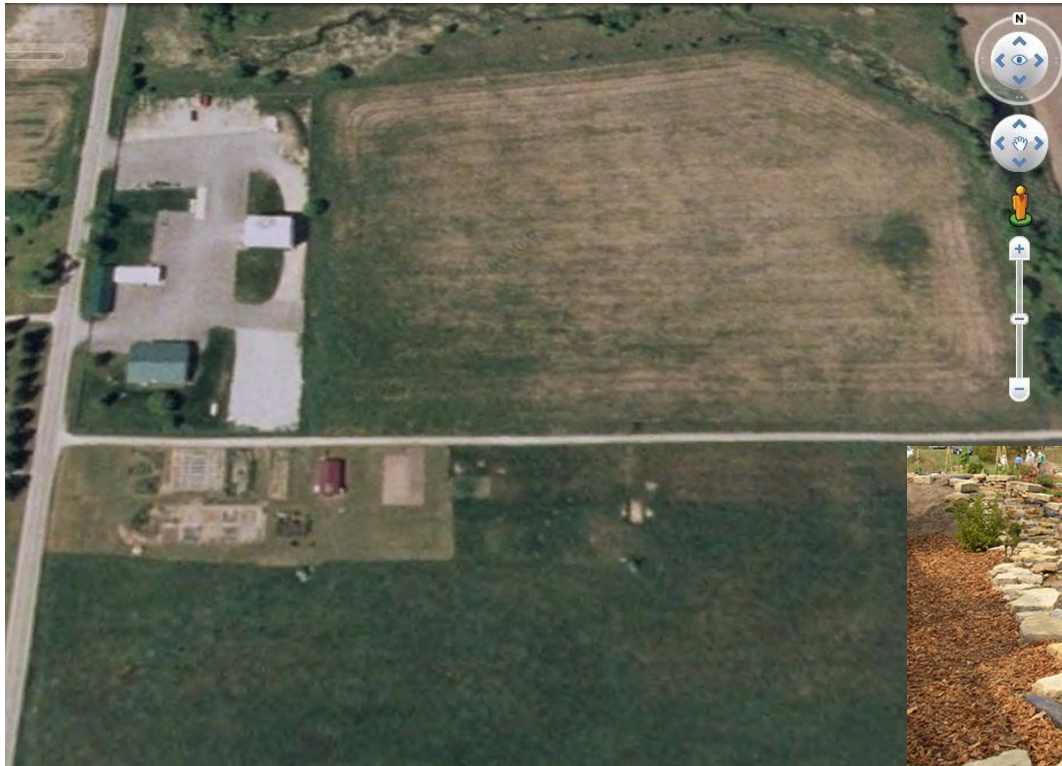


2004

Wooden fence put around herb garden.

Plastic lumber installed for raised veggie beds.





2005

Utilized a US Fish & Wildlife Service grant to replace a failing culvert on Sucker Brook with a safer bridge that did not impede fish passage.



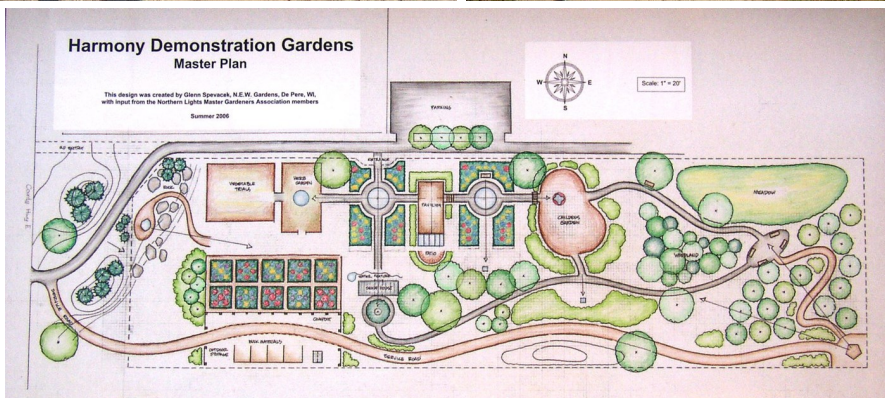
Water Garden installed.



2006

Wildlife damage fence installed to enclose 3 acres.

Master Gardeners took landscape design classes to create a master plan and got started with the first phase.





2007

Installed the parking lot to north and turnaround by hardwoods.

Finalized first demonstration garden in master plan.

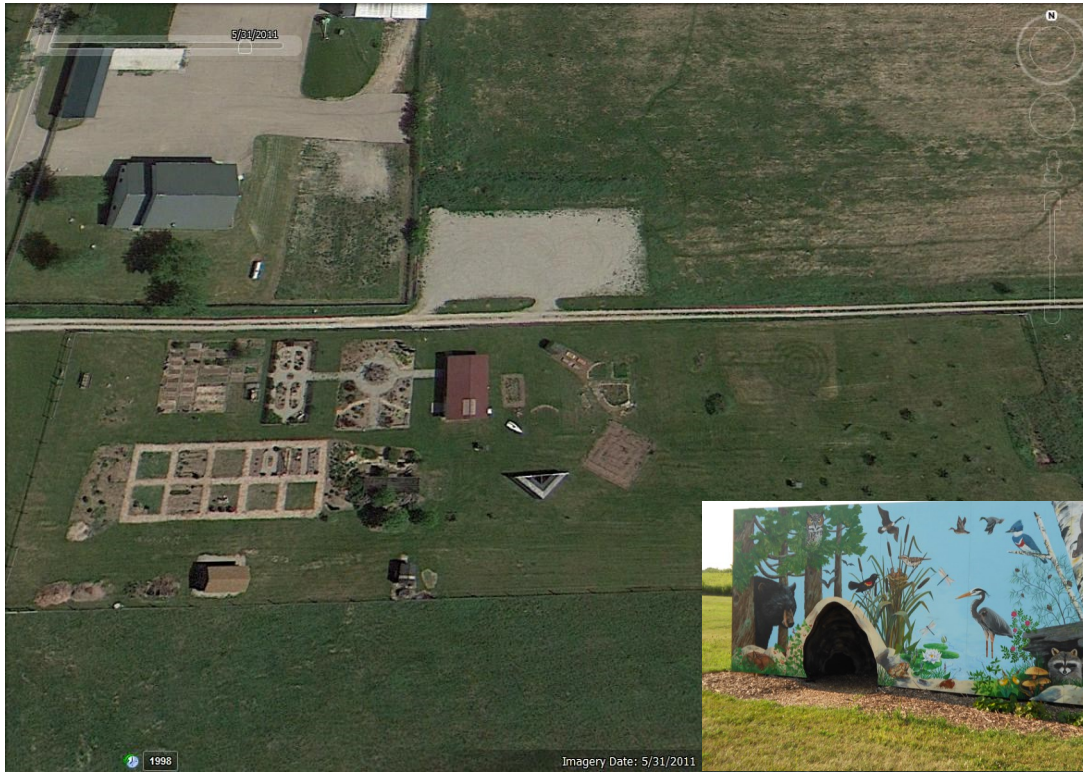


2008

Front of shed finished with circular wood blocks.

Lights in the pavilion installed.





2009 - 2011

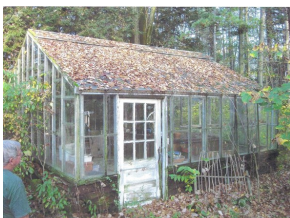
Wetlands demonstration made possible by a grant from the Natural Resource Foundation.

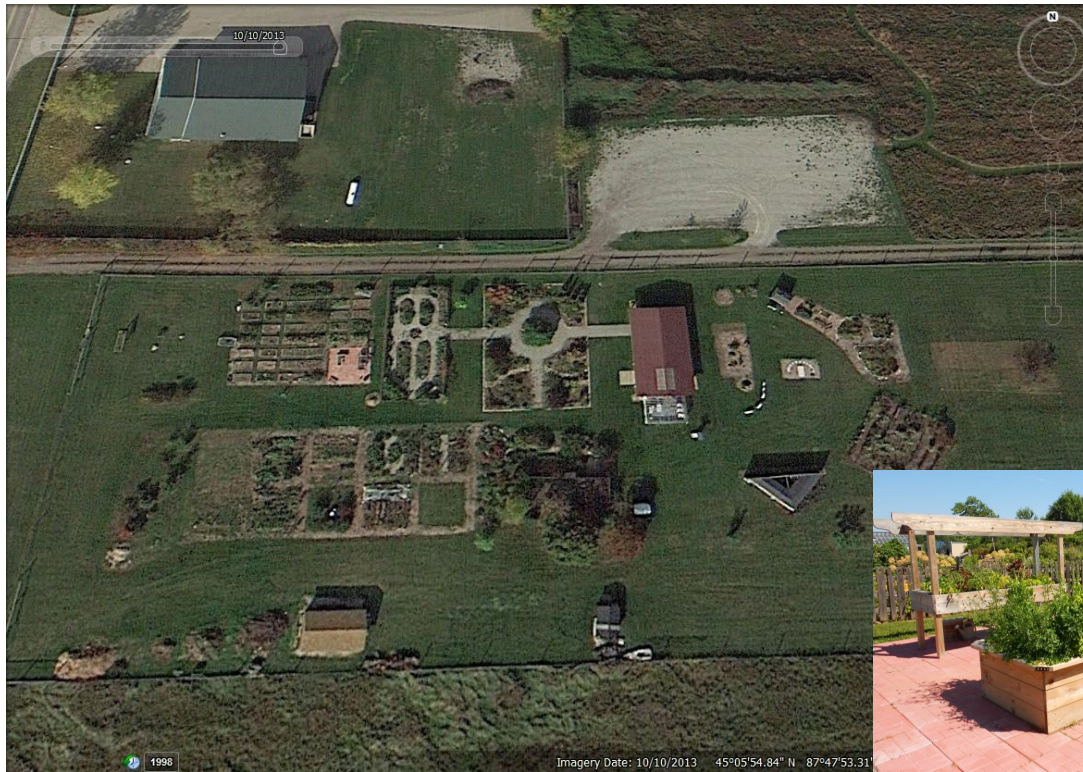
Chipmunk tunnel built.



2012

A donated glass greenhouse was attached to pavilion.





2013-2014

Bridge installed over an eroded area in Hardwoods.

The Children's Learning Garden expanded by continuing projects.



Enabling Garden was completed.



2015

Hardwoods brochure and signage updated.

A model beaver lodge has been completed in the demonstration garden.



2015

July aerial view

Harmony
Demonstration
Gardens

