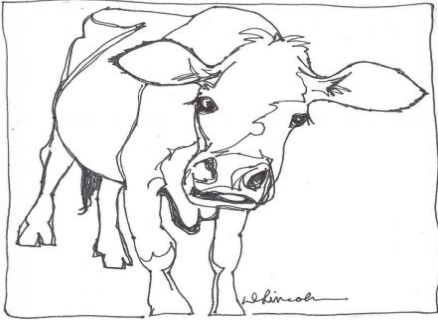


# Agriculture Newsletter



## From the Desk of Oconto County Agriculture Agent Sarah Mills-Lloyd

According to the calendar, it is officially fall. By the time this newsletter is in your hands, fall harvesting is in full swing with many farmers done harvesting corn silage.

The local Farm Service Agencies are hosting informational meetings on the Market Facilitation Program. Consider attending one of these meetings to have your questions answered regarding the program. The meeting information can be found on page three in this edition of the newsletter.

If you are a woodland owner, you may consider attending educational sessions offered through a partnership with UW-Extension Natural Resources Educational Program and the Wisconsin Department of Natural Resources. The *Learn About Your Land* is a series of three educational programs being offered in Oconto and Pulaski this fall. Information regarding registration can be found on page eight. Deadline for registration is October 15, 2018.

With a plentiful supply idle dairy farm operations and pasture land available, many who work off the farm or have retired from dairying find raising beef cattle a natural fit for their available facilities. A UW-Extension Fall Beef Meeting will be hosted on October 17. Tour a re-purposed dairy facility for a beef herd, and listen to a short presentation on renovating dairy facilities considerations when transitioning to beef. Additional registration information can be found on page five for this meeting. The deadline to register is October 10.

Due to market volatility, imposed tariffs, high input costs, and additional uncontrollable factors, it has been a financially tough year for farmers. Every dollar matters and food insecurity may be a current issue for some families. Food insecurity is an issue over 800 million Americans face each day. Located on the insert of this newsletter, there is a local resource directory including information for food pantries in Oconto and Marinette Counties.

As always, if you have questions about how I may be able to assist you and your farm, please do not hesitate to call my office (920) 834-6845.

*Sarah Mills-Lloyd*  
Agriculture Agent—Specializing in Dairy and Livestock  
Oconto County UW-Extension Office

**Oconto County  
Agriculture Agent**  
*Sarah Mills-Lloyd*  
(920) 834-6845  
*sarah.millslloyd@uwex.edu*  
Fax: (920) 834-6853  
Relay: 711 for Wisconsin

**Marinette County  
Agriculture Agent**  
*Scott Reuss*  
(715) 732-7510  
Toll Free: (877) 884-4408  
*scott.reuss@uwex.edu*  
Fax: (715) 732-7532  
Relay: 711 for Wisconsin

If you will need accommodation or assistance as you attend any UW-Extension sponsored event, please contact the host county office at least two days prior to the event. All requests will be confidential.

### NEWSLETTER TABLE OF CONTENTS

Page 2	Calendar of Local & Regional Events
Page 2	Hay Price Report
Page 3	Events, Deadlines and Notes
Page 4	Dairy Situation and Outlook by Bob Cropp
Page 5	UW-Extension Fall Beef Meeting Flyer
Page 6 & 7	Digital Technology Use on Wisconsin Dairy Farms
Page 8	Classes for Woodland Owners
Page 8	Wisconsin Pest Management Update Meeting
Insert A/B	Directory of Local Assistance

## CALENDAR OF LOCAL & REGIONAL EVENTS

October 2-6	Madison	World Dairy Expo
October 4	Marinette	Fall Landscape/Garden Management @ Harmony Gardens
October 8	Marinette	Astronomy at the Arboretum
October 10	Lena	FSA Market Facilitation Program (MFP) Informational Meeting
October 13	Marinette	Fall Family Fun Fest
October 17	Shawano	FSA Market Facilitation Program (MFP) Informational Meeting
October 17	Krakow	UW-Extension Fall Beef Meeting
October 22	Oconto	Learn About Your Land: Keys to Keeping Trees Healthy
October 23	Appleton	Wisconsin Farm Succession Professionals Network Meeting
October 23	Pulaski	Learn About Your Land: Keys to Keeping Trees Healthy
October 29	Oconto	Learn About Your Land: How to Invite Wildlife to Your Woodland
October 30	Pulaski	Learn About Your Land: How to Invite Wildlife to Your Woodland
November 5	Oconto	Learn About Your Land: Successful Tree Planting
November 6	Pulaski	Learn About Your Land: Successful Tree Planting
November 15	Kimberly	Pest Management Update
November 16		Deadline: NRCS Special EQIP Sign-up for Storm Relief

### WEEKLY HAY PRICE REPORT as of September 10, 2018

Currently hay demand and price reports can be found at:

<http://fyi.uwex.edu/forage/h-m-r>

Hay Grade	Bale type	----- Price (\$/ton) -----		
		Average	Minimum	Maximum
Prime (> 151 RFV/RFQ)	Small Square	\$250.00	\$210.00	\$320.00
	Large Square	\$184.00	\$100.00	\$250.00
	Large Round	\$108.00	\$90.00	\$120.00
Grade 1 (125 to 150 RFV/RFQ)	Small Square	\$177.00	\$125.00	\$260.00
	Large Square	\$155.00	\$120.00	\$203.00
	Large Round	\$108.00	\$80.00	\$160.00
Grade 2 (103 to 124 RFV/RFQ)	Small Square	No Reported Sales		
	Large Square	\$110.00	\$100.00	\$120.00
	Large Round	\$110.00	\$100.00	\$120.00
Grade 3 (87 to 102 RFV/RFQ)	Small Square	No Reported Sales		
	Large Square	No Reported Sales		
	Large Round	\$86.00	\$100.00	\$120.00

### Resources for Wisconsin Farmers

#### Wisconsin Farm Center

[www.datcp.state.wi.us](http://www.datcp.state.wi.us)

Keyword search: Wisconsin Farmer Resource Guide or call (800) 942-2474 to visit with the knowledgeable staff who provide everything from financial consultation to animal health.

#### UW-Extension Agriculture & Natural Resources

<http://anre.uwex.edu>

Resources and links at your fingertips.

#### Farmer to Farmer

<http://farmertofarmer.uwex.edu>

Connects Wisconsin farmers with one another for the purpose of buying and/or selling corn and forage.

#### UW-Extension Dairy Resources

Dairy—<http://fyi.uwex.edu/dairy/>

Milk Quality—<http://milkquality.wisc.edu>

Dairy Calf & Heifer Management—

<http://fyi.uwex.edu/heifermgmt/>

#### UW-Extension Livestock

Livestock— <http://anre.uwex.edu/teams/livestock/>

Beef—<http://fyi.uwex.edu/wbic/>

Horse—<http://fyi.uwex.edu/horse/>

Poultry—<http://fyi.uwex.edu/poultry/>

Sheep/Goats—

<http://fyi.uwex.edu/wisheepandgoat/>

Swine— <http://fyi.uwex.edu/swineextension/>

Small Farm Resources—

<http://fyi.uwex.edu/smallfarms/>

Grazing— <http://fyi.uwex.edu/grazes/>

Youth Livestock—

<http://fyi.uwex.edu/youthlivestock/>

## EVENTS, DEADLINES AND NOTES

### Upcoming Horticulture Programs

All events are free, unless noted.

**Harmony Arboretum Programs:** The following programs are all held at the Harmony Arboretum, within the Demonstration Gardens. Programs are held rain or shine as there is a pavilion. The entrance to the demonstration garden is located ½ mile south of Hwy 64 on Marinette County Hwy E, which is 7 miles west of Marinette, or about 10 miles east of Hwy 141.

### **Fall Landscape and Garden Management**

(October 4, 5:00 pm-6:30 pm)

Although the growing season is mostly over by early October, there are still a litany of tasks we can and should be doing to get our gardens and landscape ready for the next growing season. Join in the discussion and hands-on activities at this session led by UW-Extension Agriculture Agent Scott Reuss.

### **Astronomy at the Arboretum**

(October 8, 7:00 pm-8:15 pm)

Introduction to stars, constellations, star lore, and other space-related topics-includes a stargazing tour. Dress for the weather, hot beverages will be provided; if rain or mostly overcast, event will be cancelled.

### **Halloween Family Fun Fest**

(October 13, 2:00 pm-5:00 pm)

A family oriented event for kids. Hands-on nature crafts, games, farm animal learning and petting area, with many more activities. Check the website for more program details. Free ~ but food pantry donations accepted at entrance.

### **USDA Farm Service Agency Market Facilitation Program (MFP) Informational Meetings**

The USDA Farm Service Agency (FSA) will host informational meetings on the Market Facilitation Program (MFP) on October 10 and 17, 2018. The meetings will be held at the Oconto-Marinette FSA office on October 10 at 10:30 a.m., and the Shawano FSA office on October 17 at 10:00 a.m. FSA staff will provide an overview of the program and discuss eligibility and documentation requirements.

USDA is taking action to assist farmers in response to trade damage from unjustified retaliation by foreign nations. FSA will administer the MFP to provide payments to corn, cotton, dairy, hog, sorghum, soybean, and wheat producers starting September 4, 2018. The initial MFP payment will be calculated by multiplying 50 percent of the producer's total 2018 actual production by the applicable MFP rate. If CCC announces a second MFP payment period, the remaining 50 percent of the producer's total 2018 actual production will be subject to the second MFP payment rate.

Please RSVP for the Wednesday, October 10 meeting to the Oconto-Marinette County FSA Office at (920) 829-5406 extension 2 no later than Tuesday, October 9, 2018. Persons with disabilities who require accommodations to attend or participate in this meeting should contact Nancy Swenty at (920) 829-5406 extension 2, or Federal Relay Service at 1-800-877-8339 by October 3, 2018.

Please RSVP for the Wednesday, October 17 meeting to the Shawano County FSA Office at 715-524-4814 ext. 2 no later than Tuesday, October 16, 2018. Persons with disabilities who require accommodations to attend or participate in this meeting should contact Emily Schlidgen at (715) 524-4814 extension 2, or Federal Relay Service at 1-800-877-8339 by October 10, 2018.

### **UW-Extension Fall Beef Meeting**

A University of Wisconsin (UW)-Extension Fall Beef producer meeting is being offered to producers of all sizes and the agriculture professionals who service their operations. The agenda will include a farm tour and speakers.

Speaker topics will include "The Scoop on Minerals—Balancing Forages, Soil Fertility, and Supplements" presented by Dr. Jamie Patton, Outreach Specialist, UW-Madison Nutrient Pest Management, and "Considerations for Renovating Dairy Barns for Your Beef Herd" by Sarah Mills-Lloyd, DVM, UW-Extension Oconto County Agriculture Agent. The meeting will be held Wednesday, October 17 at Lowland Farms, located at W1123 Nichols Drive, Krakow.

The program begins with registration at 3:30 p.m. and concludes at 6:00 p.m. Registration is \$10/person and includes speakers, workshop materials, and a light supper. To register, contact the Oconto County UW-Extension office by October 10<sup>th</sup> at 920-834-6845. See flyer in this edition of the newsletter.

### **USDA Natural Resources Conservation Service: Special EOIP Sign-Up for Storm Relief**

The USDA Natural Resources Conservation Service (NRCS) announced funding is available to producers in select Wisconsin counties who experienced forest and agricultural land damage due to recent severe weather within the last two months. Angela Biggs, NRCS State Conservationist, announced farmers and forest landowners interested in the special Environmental Quality Incentives Program (EQIP) sign-up need to apply by November 16, 2018, for funding consideration. Applications are being taken at select USDA Service Centers in the storm-affected count

## **Dairy Situation and Outlook** **September 19, 2018**

*By Bob Cropp, Professor Emeritus*  
University of Wisconsin Cooperative Extension  
University of Wisconsin-Madison

With favorable domestic sales, slower growth in milk production and higher dairy exports September milk prices will be higher than August. Higher cheese and dry whey prices will push the September Class III price to around \$16.00 compared to \$14.95 in August and a low of \$13.40 back in February. While the price of butter will average lower this will be more than offset by high nonfat dry milk prices pushing the September Class IV price to around \$14.70 compared to \$14.63 in August and a low of 12.87 back in February.

Fluid (beverage) milk sales continue to trend lower. Fluid milk sales January through July were 2.2% lower than a year ago. But, with butter and cheese sales running higher total domestic sales of milk and dairy products for September will be higher than a year ago and positive for milk prices. July milk production was up just 0.5% from a year ago which was also positive for milk prices. But a little surprising August milk production improved to 1.4% higher than a year ago. Milk cow numbers fell by 9,000 head June to July but regained 5,000 head in August. August Cow numbers were down slightly from a year ago but an improvement in milk per cow of 1.4% higher than a year ago resulted in the 1.4% increase in total milk production. This higher than expected increase in August milk production could dampen milk prices some. But, schools are now in session moving more milk to fluid use and less for cheese production, and the fact that the sales of butter and cheese improve seasonally during the thanksgiving to Christmas period is still positive for milk prices.

Contributing to the higher August milk production were increases in California milk production of 1.2%, Wisconsin and Minnesota by 1.4%, South Dakota by 2.7%, Texas by 9.5%, New York by 1.7% and Idaho by 0.9%. Both Kansas and Colorado had increases of 8.6%. Dairy expansions were still evident in Texas, Kansas and Colorado by the fact that these states had 20,000, 8,000 and 14,000 more cows respectively than a year ago. In contrast Michigan had 5,000 fewer cows reducing their milk production by 0.6%, Pennsylvania had 6,000 fewer cows reducing milk production by 2.6% and Florida had 5,000 fewer cows reducing milk production by 7.3%. While California had 12,000 fewer cows, milk per cow had improved to 1.9% higher than a year ago. Wisconsin had 4,000 fewer cows but milk per cow was 1.7% higher.

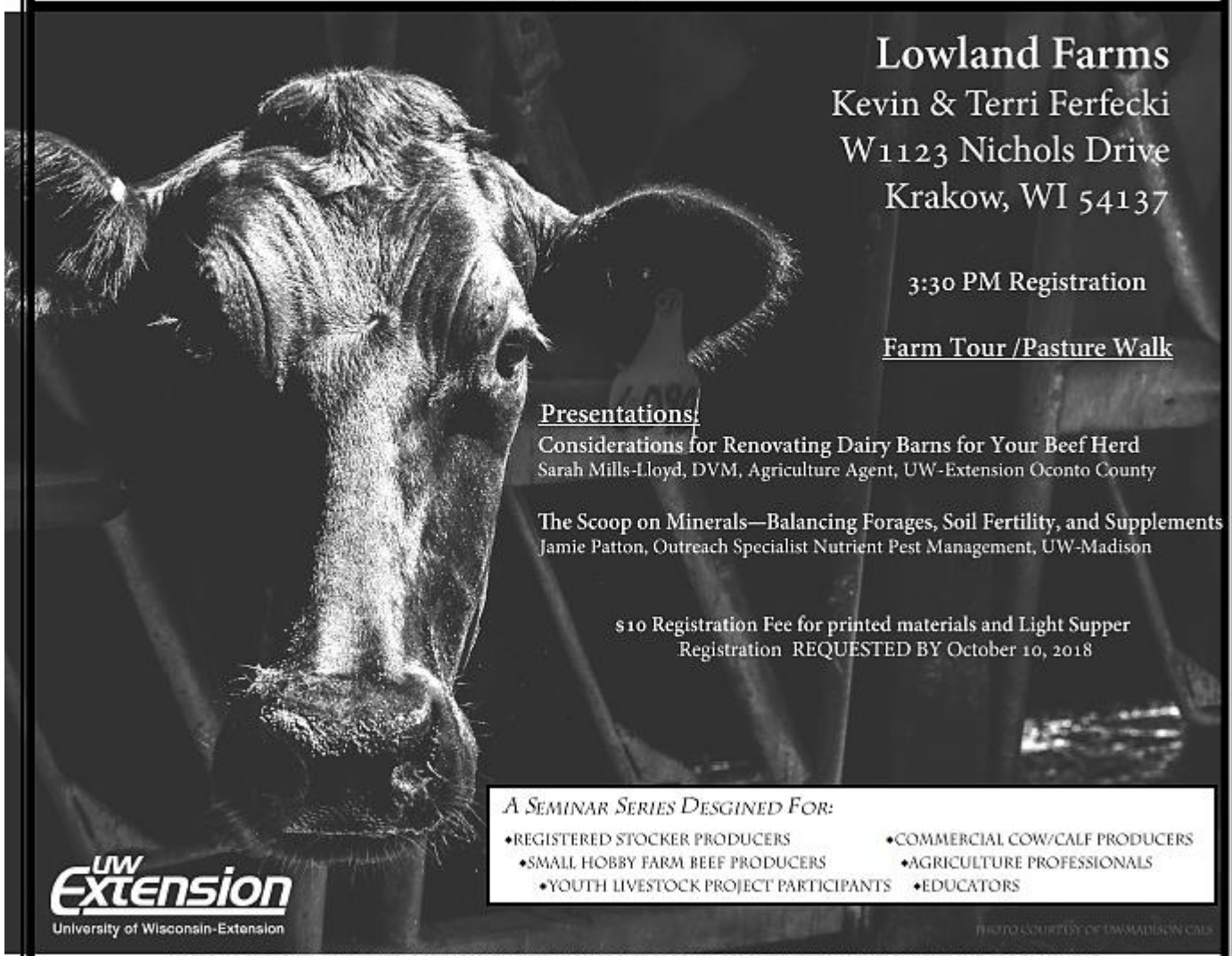
Retaliatory tariffs imposed by Mexico and China beginning in July is having some impact on dairy exports. It appears that Mexico in anticipation of their 25% tariff on U.S. cheese increased cheese imports from U.S. by 43% in June compared to a year ago because July imports were 1% lower than a year ago. July cheese exports to China dropped 56% from a year ago with whey exports down 26%. With China being the largest U.S. market for whey products July whey exports were 8% lower than a year ago, the lowest whey exports in more than two years. While the volume of dairy exports in July were the lowest since January they remained above a year ago due to continued strong exports of nonfat dry milk to Mexico and higher exports of dairy products to other U.S. international customers. Compared to a year ago, July exports of nonfat dry milk/skim milk powder were 30% higher, cheese just 1% higher, butterfat 84% higher and lactose 15% higher. On a total milk solids basis July exports were equivalent to 15.0% of U.S. milk production bringing the year-to-date to 16.6% of U.S. milk production.

While stocks of dairy products remain more than adequate to meet demand they did tighten some in July. Compared to a year ago, July 31<sup>st</sup> stocks of butter were just 3.5% higher, American cheese stocks 0.8% lower, stocks of cheese varieties other than American 9.1% higher bringing total cheese stocks to 3.3% higher. Nonfat dry milk stocks were 21.3% lower and dry whey stocks 21.7% lower.

How retaliatory tariffs impact U.S. dairy exports in the months ahead continues to bring uncertainty to future milk prices. But, for the last quarter of the year domestic demand should continue to run above a year ago and the growth in milk production may increase by no more than 1%. Even if U.S. dairy exports show some more weakness the Class III price could stay in the low \$16's and the Class IV price in the low \$15's. Looking into 2019 a continued relatively strong economy will be positive for domestic sales. The growth in milk production is likely to stay well below 2%. Milk cow numbers may show little or no increase. With anticipated somewhat lower feed prices milk per cow may improve some. USDA is forecasting just a 0.1% increase in cow numbers and a 1.4% increase in milk per cow bringing the increase in total milk production to 1.5%. If retaliatory tariffs remain, USDA is forecasting lower dairy exports but not falling to a level that will lower milk prices compared to 2018. In fact, USDA's is forecasting that 2019 milk prices could average higher than 2018. I think it is reasonable to assume milk prices will average higher in 2019. The level of milk production and dairy exports will be major factors in how much higher.



# UW-EXTENSION FALL BEEF MEETING OCTOBER 17, 2018



**Lowland Farms**  
Kevin & Terri Ferfecki  
W1123 Nichols Drive  
Krakow, WI 54137

3:30 PM Registration

Farm Tour /Pasture Walk

Presentations:

Considerations for Renovating Dairy Barns for Your Beef Herd  
Sarah Mills-Lloyd, DVM, Agriculture Agent, UW-Extension Oconto County

The Scoop on Minerals—Balancing Forages, Soil Fertility, and Supplements  
Jamie Patton, Outreach Specialist Nutrient Pest Management, UW-Madison

\$10 Registration Fee for printed materials and Light Supper  
Registration REQUESTED BY October 10, 2018

*A SEMINAR SERIES DESIGNED FOR:*

- ◆ REGISTERED STOCKER PRODUCERS
- ◆ SMALL HOBBY FARM BEEF PRODUCERS
- ◆ YOUTH LIVESTOCK PROJECT PARTICIPANTS
- ◆ COMMERCIAL COW/CALF PRODUCERS
- ◆ AGRICULTURE PROFESSIONALS
- ◆ EDUCATORS



PHOTO COURTESY OF UW-MADISON CALS

AN EEO/AA EMPLOYER, UNIVERSITY OF WISCONSIN-EXTENSION PROVIDES EQUAL OPPORTUNITIES IN EMPLOYMENT AND PROGRAMMING, INCLUDING TITLE VI, TITLE IX, AND THE AMERICAN WITH DISABILITIES ACT (ADA) REQUIREMENTS.

## 2018 UW-Extension Fall Beef Cattle Meeting Registration

Name(s): \_\_\_\_\_

Company: \_\_\_\_\_ Telephone: \_\_\_\_\_

Address: \_\_\_\_\_ City/State/ZIP: \_\_\_\_\_

Email address (for a direct mailing in future years): \_\_\_\_\_

Registration: \_\_\_\_\_ People x \$10 per person (includes meals & materials) = \$ \_\_\_\_\_

*Total Enclosed:* = \$ \_\_\_\_\_

Make Check Payable to: UW-Extension  
Mail to: UW-Extension Oconto County  
Attn: Sarah Mills-Lloyd  
301 Washington Street  
Oconto, WI 54153

**Registration due Wednesday, October 10<sup>th</sup>**



## Digital Technology Use on Wisconsin Dairy Farms

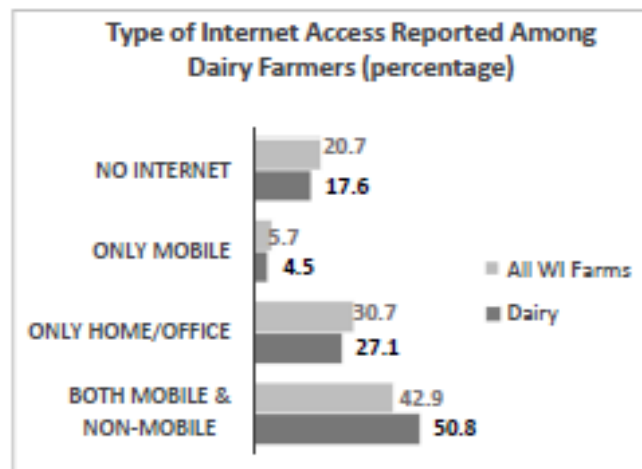
Study by Professor John Shutske, UW-Madison, Professor David Trechter, UW-River Falls, with Assistant Professor, Brian Luck, UW-Madison, and Jessica Drewry, Assistant Faculty Associate, UW-Madison  
Funded by the UW-Consortium for Extension and Research in Agriculture and Natural Resources (CERANR)  
Contact author at [shutske@wisc.edu](mailto:shutske@wisc.edu) for additional information, permissions & material. Version Sept-18-2018

### Introduction:

In 2018, we asked 3,000 Wisconsin dairy, livestock and crop farmers to participate in a survey about how they access and use the Internet. The study team asked about other categories of digital technology used on farms such as sensors, automation, precision agriculture equipment and smartphone apps. Barriers to digital technology adoption were studied including those connected to cost, privacy and security. Of the surveys delivered, 46% of the farmers responded. This fact sheet presents data for the 387 study respondents who indicated that their farm included a dairy enterprise. The median number of cows on these operations was 163 (compared to a statewide average of 134), with seven farms having 2,000 or more cows. Comparison data for ALL Wisconsin farms (not including dairy) that responded is also presented.

### Internet Access Among Dairy Producers

Just over half of dairy producers (50.8%) have both mobile internet access as well as home/office access such as DSL, satellite, etc. Only 4.5% had mobile Internet access as a sole source; 27.1% only used a fixed home/office connection (something other than mobile). A total of 17.6% reported that they did NOT have any Internet access which is slightly better than the 20.7% of non-dairy farmers who responded who reported none.



### Internet Satisfaction

Dairy producers gave satisfaction scores on factors such as speed (download and upload), reliability and cost for mobile and home/office Internet connections. Satisfaction scores were scaled from 1=Very Dissatisfied, 3=Neutral, and 5=Very Satisfied. Producers are slightly more satisfied with mobile Internet service and slightly more satisfied with upload speeds versus download speeds. Satisfaction was higher with download speed on a mobile device versus a non-mobile connection. This is not surprising as nearly 30% with a home/office connection receive service via DSL and 3.3% report using "dialup." Average monthly cost for a bundled mobile Internet access plan as reported by dairy operators was \$157.80. The average bundled non-mobile plan (often with other features) was \$90.67

### Home/Office (non-mobile) Satisfaction Scores (1 = very dissatisfied; 3= Neutral; 5 = very satisfied)

Factor	Dairy	Other Farms
Service Reliability	3.54	3.50
Upload Speed	3.42	3.41
Data Cap Adequacy	3.40	3.48
Download Speed	3.26	3.29
Cost for Internet Access	2.87	2.87
Speeds During Peak Use	2.82	2.95
<b>OVERALL NON-MOBILE SATISFACTION</b>	<b>3.29</b>	<b>3.30</b>

### Mobile (including smartphones) Satisfaction Scores (1 = very dissatisfied; 3=Neutral; 5=very satisfied)

Factor	Dairy	Other Farms
Upload Speed	3.61	3.54
Service Reliability	3.58	3.52
Download Speed	3.51	3.48
Connection Coverage in Area	3.43	3.33
Data Cap Adequacy	3.34	3.36
Speeds During Peak Use	3.27	3.29
Cost for Basic Mobile Plan	2.97	2.97
Cost of Mobile Data Plan	2.90	2.94
<b>OVERALL MOBILE SATISFACTION</b>	<b>3.40</b>	<b>3.34</b>



**How Are Farmers Using Internet Service?**

Participants were asked about how often they use the Internet for certain activities and tasks. The percent of respondents who indicated that they did these items “often” or “always” can be seen in the following table.

Activity/Task	Percent Often/Always	
	Dairy	Other Farms
Access Weather Information	74.1%	69.1%
Access Market/Price Information	52.7%	51.1%
Complete Farm Paperwork	40.5%	29.7%
Download Data Files	30.5%	17.7%
Access Farm-Related Video Content	25.0%	17.2%
Upload Data Files (to vendors, consultants, etc.)	29.7%	17.3%
Access Online Software/Applications	29.4%	19.9%
Access Online Professional Development/Education	18.7%	15.6%
Access Information or Apply for Farm Programs	7.4%	6.5%

**Who Are Dairy Farmers Communicating with Using Digital Technology?**

Dairy producers were asked about how often they use the Internet or their smartphone to contact/receive information from various categories of agricultural service providers. This includes use of email, text-messaging, videoconferencing, sharing digital photos, etc. The following table shows the percentage indicating that they used technology to communicate with these individuals either “most weeks” or “almost daily.”

Type of Agricultural Service Provider	Percent Contacting Most Weeks or Almost Daily	
	Dairy	Other Farms
Veterinarian	27.7%	4.9%
Other Farmers/Producers	24.4%	13.4%
Supply Vendor	21.6%	10.8%
Crop Consultant	20.7%	11.2%
Purchaser of farm’s products (coop, processor, etc.)	18.8%	12.1%
Farm Management Consultants	17.9%	4.3%
Lender, Accountant, Tax Professional	16.7%	8.0%
UW-Extension Personnel	4.5%	2.5%

**Other Types of Digital Information & Technology in Current Use**

Survey respondents were asked to indicate which types of digitally-based information/technology platforms and categories they were actively using within their farming operation.

Type of Digital Information/Platform	Percent Using Often/Always	
	Dairy	Other Farm
Financial records	49.4%	34.9%
Smartphone apps for marketing	38.3%	25.6%
Market Information (e.g. DTN)	35.0%	35.8%
Precision Planting Equipment	19.3%	11.7%
Precision Harvesting Equipment	19.3%	14.6%
Sensor Data from Livestock	16.5%	1.7%
Driver-assisted Steering on Farm Equipment	14.1%	8.2%
Building or Storage Unit Sensors	10.8%	3.4%
UAVs/ Drones	8.5%	6.2%
Soil Sensor Data	4.9%	3.7%
Robotic Milking Machines	3.1%	0%

**Barriers and Obstacles to Dairy Farmers Adopting Digital Technology**

Finally, dairy farmer participants had the chance to rank the importance of barriers to digital technology adoption. The question was (paraphrased) “How high a barrier is each of the following in terms of limiting your use of digital technology to support your farming operation?” We hope that these data illuminate some key areas for focus for educational programs, policy discussions and other changes that might be needed.

Issue/Barrier	Percent Citing Medium/High	
	Dairy	Other Farms
Security concerns (can anyone else access my data?)	65.3%	57.1%
Privacy concerns	63.7%	58.2%
Cost	55.8%	51.5%
Ability to keep up w/tech change	55.0%	54.4%
Lack of understanding how to understand/use the data	50.7%	50.1%
Lack of tech training opportunity	46.1%	44.9%
Poor local infrastructure (e.g. inadequate internet connections)	41.6%	39.3%
Compatibility of software/systems	40.4%	37.6%
Lack of interest	38.5%	38.7%
Lack of comfort with technologies	35.5%	53.4%
Lack of internet service providers	33.2%	32.3%
Lack of local hardware vendors	27.5%	24.1%
Lack of applicable software	22.7%	26.9%

**Summary:**

It is the research team’s hope that these data might be used to better inform conversations among all stakeholders who work within Wisconsin agriculture. There are still “digital divides” across the state based upon some of the variables described through data in this fact sheet. When we looked at ALL farmers who responded (nearly 1,100), we learned of other factors that are associated with Internet access and use. These include gender (women tend to be more likely to access/use the internet); age (people under 55 are more likely to use); education; income; and, farm size.

These data point to areas of opportunity for education and/or policy related discussions. Consistently, it seems that farmers are interested in technology use and applications, but often see barriers associated with security, privacy, and being able to derive value from the application of digital technologies and the information flows these technologies create. Members of the research team are willing to consult and advise on next steps as a part of this project.

OCONTO • PULASKI | OCTOBER/NOVEMBER 2018

# Learn About Your Land

## CLASSES FOR WOODLAND OWNERS

Pre-register at [woodlandinfo.org/register](http://woodlandinfo.org/register)

Registration per person is \$35 for the entire series or \$15 per session PAID BY OCTOBER 15, 2018.

Session cancellations and rescheduled dates will be posted before 4:30 p.m. on the day of the session. To see cancellations, visit [woodlandinfo.org](http://woodlandinfo.org).



### SESSION 1

#### KEYS TO KEEPING YOUR TREES HEALTHY

A healthy woodland provides many benefits. Your woodland may look fine, but how do you know if it's healthy? Do you have injured or dying trees? This session will review insects, diseases, animals, non-native invasive species, environmental factors and improper management that can affect the health of your woods. You will leave knowing the signs and symptoms of sick trees and who to call if you have a concern.

#### LOCATIONS:

Oconto - Monday, October 22, 6-8 pm  
Pulaski - Tuesday, October 23, 6-8 pm



### SESSION 2

#### HOW TO INVITE WILDLIFE TO YOUR WOODLAND

Learn to enhance your woodlands to attract a variety of wildlife. This session identifies the four requirements to attracting wildlife to your land: space, water, food and shelter, as well as how you can manage your woods to improve the wildlife potential.

#### LOCATIONS:

Oconto - Monday, Oct 29, 6-8 pm  
Pulaski - Tuesday, Oct 30, 6-8 pm



### SESSION 3

#### SUCCESSFUL TREE PLANTING

This session will identify the steps needed to successfully establish new trees. Learn which trees will grow best on your land, how to prepare your land, techniques for planting, and how to care for newly planted trees.

#### LOCATIONS:

Oconto - Monday, Nov 5, 6-8 pm  
Pulaski - Tuesday, Nov 6, 6-8 pm

Connect, get advice or learn more.

#### CONTACT YOUR COUNTY FORESTER:

OCONTO COUNTY:  
Chris Duncan 920-846-0331  
[christopher.duncan@wisconsin.gov](mailto:christopher.duncan@wisconsin.gov)

SHAWANO COUNTY  
Nick Hovda 715-584-3040  
[nicholas.hovda@wisconsin.gov](mailto:nicholas.hovda@wisconsin.gov)

Find other Dept. of Natural Resources foresters who work in your county:  
[dnr.wi.gov/topic/forestlandowners/locator](http://dnr.wi.gov/topic/forestlandowners/locator)

#### STAY CONNECTED TO CURRENT INFORMATION ABOUT WOODLANDS AND FUTURE EVENTS FOR LANDOWNERS

Visit our website for new and interesting information:  
[woodlandinfo.org](http://woodlandinfo.org)

Follow us on Facebook:  
[facebook.com/LearnAboutYourLand](https://facebook.com/LearnAboutYourLand)

Subscribe to our quarterly email newsletter:  
send an email to:

[learnaboutyourland@gmail.com](mailto:learnaboutyourland@gmail.com)  
with "subscribe" in the subject line



#### CONNECT WITH OTHER WOODLAND OWNERS

Join the Wisconsin Woodland Owners Association:  
[wisconsinwoodlands.org](http://wisconsinwoodlands.org)

Photos: WDNR and John Haack | Graphic design: UW Environmental Resources Center

[woodlandinfo.org](http://woodlandinfo.org) & [www.facebook.com/LearnAboutYourLand](https://www.facebook.com/LearnAboutYourLand)

# 2018 Wisconsin Pest Management Update Meetings

Three hours of Certified Crop Advisor CEU credits in pest management are requested for each session.

The schedule for the Wisconsin Pest Management Update meeting series is listed below. Presentations will include agronomic pest management information for Wisconsin field and forage crops. Speakers include Mark Renz and Rodrigo Werle, weed scientists, Damon Smith, plant pathologist, and Bryan Jensen, entomologist.

The format will be the same as in 2017. Meetings will either be in the morning or afternoon and will run for 3 hours. Note that several locations and contacts have changed since 2017 (marked with \*). Please read carefully and make sure you contact the appropriate person at your desired location.

*Please make your reservation with the host agent at least one week prior to the scheduled meeting date.*

	Location	Contact
Thursday November 15 1pm-4pm	<b>Kimberly</b> Liberty Hall 800 Eisenhower Drive Kimberly, WI 54136 (Highway 441, College Avenue Exit, East 1 block)	Kevin Jarek Outagamie County UW Extension 3365 W. Brewster St. Appleton, WI 54914 (920) 832-5128

An EEO/AA employer, University of Wisconsin-Extension provides equal opportunities in employment and programming, including Title VI, Title IX, and the Americans with Disabilities Act (ADA) requirements.

La Universidad de Wisconsin-Extensión, un empleador con igualdad de oportunidades y acción afirmativa (EEO/AA), proporciona igualdad de oportunidades en empleo y programas, incluyendo los requisitos del Título VI, Título IX, y de la Ley Federal para Personas con Discapacidades en los Estados Unidos (ADA).



## Oconto County Food Pantries

### **Hillside Assembly of God**

5890 State Highway 22, Gillett  
 (920) 855-2962  
 Wednesday: 6:00-6:45pm & 8:00-8:30pm  
 Sunday: Before & After services  
 Tuesday-Friday: 9:00am-3:00pm  
 \*\*Emergencies Only

### **St. John Lutheran**

101 West Main Street, Gillett  
 (920) 855-6215  
 3<sup>rd</sup> Wednesday of each month:  
 10am-11am  
 \*\*Gillett / Suring Area Residents  
 \*\*Call for emergency food needs

### **NEWCAP**

1201 Main Street, Oconto  
 (920) 834-4621  
 Monday and Thursday:  
 8:00am- 12:00pm & 12:30pm-5:00pm  
 \*\*Bring proof of Oconto County address &  
 photo identification

### **Bread by the Bay**

United Methodist Church  
 641 Washington Street, Oconto  
 (920) 834-5857  
 1<sup>st</sup> & 3<sup>rd</sup> Tuesday of each month: 3:30pm-6:00pm  
 Registration begins at 3:00pm

### **Kingdom Come Food Pantry**

520 N. Locust St. Oconto Falls  
 (920) 604-2729  
 Tuesday: 10am-6pm  
 Registration begins at 9:30am  
 \*\*Bring identification & proof of current address  
 \*\*Delivery on Tuesdays to shut-ins with medical  
 note ONLY  
 \*\*Times & Dates subject to change

### **Feed My Sheep**

St. Anne Parish Center  
 221 East Main Street, Lena  
 (920) 829-5222  
 Tuesday: 10am-11am & 5pm-6pm  
 \*Bring photo identification & proof of current  
 address

### **St. John Lutheran**

17963 State Highway 32, Townsend  
 (715) 276-3920  
 2<sup>nd</sup> & 4<sup>th</sup> Wednesday of the month:  
 9am-10am & 6pm-7pm  
 \*\* Proof of Suring north to Wabeno address

### **Manna Meals – Soup Kitchen**

First American Lutheran Church  
 511 Madison Street, Oconto  
 (920) 834-5790  
 4<sup>th</sup> Monday of each month: 5pm-6pm

### **Cans of Hope**

Klondike Church  
 Delivery Service  
 (920) 655-4050 or  
 (920) 609-5213

### **Ruby's Pantry**

Gillett High School  
 208 West Main Street / Hwy 22  
 (920) 855-2962  
 2<sup>nd</sup> Saturday of each month  
 Doors open @ 8:00am  
 Distribution 9:00am-10:30am  
\$20 donation for large box of food  
 \*\* Bring your own boxes or baskets for food!  
[www.rubyspantry.org](http://www.rubyspantry.org)

## Marinette County Food Pantries

Visit the following website for current information:

<http://marinette.uwex.edu/files/2010/06/food-resources-Marinette-CTY.pdf>

## Other Assistance

### Dial 211

The mission of 2-1-1 Wisconsin is to connect everyone in Wisconsin with quick and easy access to community-based health and human services information and resources.

### Harvest of Hope Fund

If you are a Wisconsin farm family needing financial help to meet emergency needs, complete and send the application form and financial planning statement to: Madison Christian Community 7118 Old Sauk Road Madison, WI 53717. More information on this program can be found at:  
[http://www.madisonchristiancommunity.org/harvest\\_of\\_hope.aspx](http://www.madisonchristiancommunity.org/harvest_of_hope.aspx)

## Resources for Wisconsin Farmers

### Wisconsin Farm Center

[www.datcp.state.wi.us](http://www.datcp.state.wi.us)

Keyword search: Wisconsin Farmer Resource Guide or call (800) 942-2474 to visit with the knowledgeable staff who provide everything from financial consultation to animal health.

### UW-Extension Agriculture & Natural Resources

<http://anre.uwex.edu>

Resources and links at your fingertips.

### Farmer to Farmer

<http://farmertofarmer.uwex.edu>

Connects Wisconsin farmers with one another for the purpose of buying and/or selling corn and forage.

### UW-Extension Dairy Resources

Dairy—<http://fyi.uwex.edu/dairy/>

Milk Quality—<http://milkquality.wisc.edu>

Dairy Calf & Heifer Management—<http://fyi.uwex.edu/heifermgmt/>

### UW-Extension Livestock

Livestock— <http://anre.uwex.edu/teams/livestock/>

Beef—<http://fyi.uwex.edu/wbic/>

Horse—<http://fyi.uwex.edu/horse/>

Poultry—<http://fyi.uwex.edu/poultry/>

Sheep/Goats— <http://fyi.uwex.edu/wisheepandgoat/>

Swine— <http://fyi.uwex.edu/swineextension/>

Small Farm Resources— <http://fyi.uwex.edu/smallfarms/>

Grazing— <http://fyi.uwex.edu/grazres/>

Youth Livestock— <http://fyi.uwex.edu/youthlivestock/>