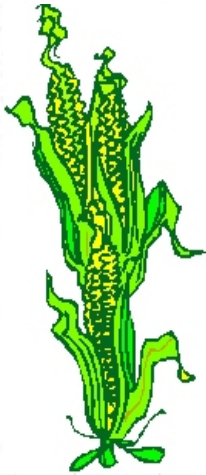




Extension
UNIVERSITY OF WISCONSIN-MADISON
MARINETTE COUNTY

Courthouse
1926 Hall Avenue
Marinette, WI 54143
Phone: 715-732-7510



If you will need any type of accommodation or assistance as you attend any Extension sponsored event, please contact the host county or Scott at the Marinette County office at least two days prior to the event. All requests will be confidential.

Scott Reuss
715-732-7510
1-877-884-4408
cell 715-701-0966
sreuss@marinettecounty.com
scott.reuss@wisc.edu

An EEO/Affirmative Action Employer, University of Wisconsin-Extension provides equal opportunities in employment and programming, including Title IX and ADA requirements.

October, 2021 Newsletter

Safety on the roadways is on nearly everyone's minds at this time of the year. Whether it is because you are being diligent and thinking ahead for the safety of yourself and the others on the road OR because you just got reminded by another driver that they don't appreciate having to think or do something slightly abnormal on their commute - like actually slow down and pay attention to what is going on around them. Anyway, be as careful as you can during this harvest season and try to remember that the average person does still care that you are being safe and courteous, even if they aren't the ones you hear from.

I have enclosed the full high moisture corn pricing table in this newsletter. If you want assistance in pricing, contracting, or conducting yield estimations as you do any farm to farm sales this year, contact me and we will get it done. Lastly, hope to see a number of you at one, or more, of the four upcoming field days as they showcase great local research and on-farm demonstration projects.

Scott Reuss

Table of Contents:

Page 2	Mahoney Farms Field Day flyer
Page 3	Lewandowski Pasture Walk flyer
Page 4	Dairy Price Situation and Update
Page 5	Pricing High Moisture Corn chart
Page 6	Grant Writing Workshops; Waterhemp Seed Needed Beef Producer Survey and BQA training note
Page 7	Corn Nitrogen Rates & Envita™ Field Day flyer
Page 8	Corn: Nitrogen Rates & Hybrid Selection Field Day flyer

Upcoming Events

- Wed., Sept. 29 Field Day at Mahoney Farms - part of Green Bay West Shores Demonstration Farm Network - see page 2
- Sept. 30 Last day to purchase Forage Production APH crop insurance for 2022, or winter wheat insurance.
- Oct. 6 & 7 Grant writing workshops (page 6)
- Thurs., Oct. 14 10 a.m. to 12:30 p.m. Lena Soy Foliar Products and Corn Nitrogen Rate & Products Plot Field Day - page 7
- Sat., Oct. 16 10 a.m. to 1 p.m. Beaver Beef Grazing Pasture Walk-pg. 3
- Tuesday, Oct. 26 10 a.m. to Noon Crivitz Corn Hybrid Selection and Nitrogen Rate Plots Field Day (see page 8)
- Wednesdays, November 10 & 17 Farm Financial Management Workshop - details in next newsletter - focus will be on compiling, understanding, and using financial statements.
- Wednesday, Dec. 1st Coleman Beef Quality Assurance Training



GREEN BAY WEST SHORE

Demonstration Farms Network

FIELD DAY AT MAHONEY FARMS

SEPTEMBER 29TH 10:00 AM-1:00 PM

JOIN US FOR A FIELD DAY, HOSTED BY MAHONEY FARMS, ON WEDNESDAY SEPTEMBER 29TH, 2021 FROM 10:00 AM TO 1:00 PM. LUNCH PROVIDED FOR ALL ATTENDEES. PLEASE R.S.V.P ON FACEBOOK, BY EMAIL MATT@TILTHAG.COM OR TO 920-470-3889 BY MONDAY SEPTEMBER 27TH

Come see Corn planted in 60" rows, interseeded covers and have a soil pit discussion with Jamie Patton. Lunch will be provided at noon. We hope you can join us on the 29th!

Participation in this event is voluntary and all participants are responsible for following best practices in regards to their safety. This is an agricultural tourism event and anyone participating in or observing an agricultural event concerning the Green Bay West Shore Demonstration Farm Network assumes the risks inherent in the agricultural tourism event that may include condition of the land, unpredictable behavior of animals, the ordinary dangers associated with equipment used in farming operations and the potential that a participant in the agricultural tourism activity may act in a negligent way that may contribute to injury or death. The agricultural tourism provider is not liable for the injury or death of a person involved in an agricultural tourism activity resulting from these inherent risks.

60" Corn

Soil Pit

**Covers
Interseeded Into
Corn**

FIELD DAY LOCATED AT

MAHONEY FARMS

8641 HWY 32

Suring, WI 54174

Questions call Matt
920-470-3889

Follow us :

@GBWSDemo on Facebook
and Twitter

Beef Management on Grass: A Pasture Walk for new and established graziers



**Saturday, October 16
10 a.m. to 1 p.m.**

**Lunch Provided – Sponsored by Crivitz Feed Mill and
Marinette Cty. Dairy Promotions**

**Location: W8623 Cty. Hwy. P; Crivitz, WI (1.5 miles
west of Hwy. 141 on Hwy. P)**

Host: Greg Lewandowski

**Pre-registration appreciated to ensure lunch availability for all
attendees. Text/call Scott Reuss at 715-701-0966 or email to
scott.reuss@wisc.edu with number attending.**

Discussion and Viewing Topics:

- + Establishing a grazing operation: Planning, Cost-share opportunities,
transitioning from row crops to rotational grazing, Resources available,
Fence and water options, Lessons learned the 1st Year.**
- + Fall Forage Management Considerations**
- + Grazing forages selection for NE WI**
- + Any other topic brought up by attendees!**

Free to attend.

Welcoming members of the Farmer Veteran Coalition of Wisconsin



**Extension
UNIVERSITY OF WISCONSIN-MADISON**

**An EEO/AA employer, University of Wisconsin-Madison, Division of Extension provides equal
opportunities in employment and programming, including Title VI, Title IX, and the Americans with
Disabilities Act (ADA) requirements. If you will need accommodation or assistance as you attend this
event, please contact the Marinette office, at 715-732-7510, as soon as possible prior to the event.**

Dairy Situation and Outlook, September 20, 2021
By Bob Cropp, Professor Emeritus racropp@wisc.edu
University of Wisconsin-Madison, Cooperative Extension

USDA's milk production report estimated August milk production to be 1.1% higher than a year ago. This is the first time the growth in milk production has been below 2% since March. Milk cow numbers have declined for three consecutive months. August cow numbers declined 19,000 from July and 29,000 from May. The number of cows was still 1.1% higher than a year ago. Just nine of the twenty-four reporting states had fewer milk cows than a year ago with the largest reductions in New Mexico down 15,000 head and Washington down 10,000 head. Adverse weather impacted milk per cow with no increase over a year ago. Ten of the twenty-four states had milk per cow lower than a year ago.

The increase in milk production was lower than recent months in each of the five leading dairy states. Milk production was up 0.7% for California, 2.6% for Wisconsin, 1.1% for Idaho, 0.3% for New York and 3.2% for Texas. South Dakota led all states in increased milk production, up 16.2% from 22,000 more cows and higher milk per cow. Seven of the twenty-four states had less milk production than a year ago and all seven had fewer milk cows. Milk production was 0.5% lower in Arizona, 4.0% lower in Florida, 1.4% lower in Illinois, 9.3% lower in New Mexico, 0.9% lower in Vermont, 2.5% lower in Virginia and 6.6% lower in Washington. The monthly increase in milk production from the prior year is likely to continue to decline for the remainder of the year and going into next year. Dairy producers are experiencing tight margins due to higher feed costs, likely leading to further reductions in cow numbers and dampening milk per cow.

Thus far this month compared to August the price of butter has averaged 11 cents per pound higher, nonfat dry milk 8 cents higher, barrel cheese 5 cents higher, 40-pound cheddar blocks 4 cents higher and dry whey unchanged. With higher dairy product prices, the September Class III price will average about \$16.60 compared to \$15.95 for August and Class IV about \$16.50 compared to \$15.92 for August.

What can we expect for milk prices for the remainder of the year? Butter and cheese prices normally increase as does milk price Sept. through Nov. Milk production is seasonally lower late summer, schools open increasing beverage milk sales and dairy product buyers increase purchases of butter and cheese to build stock levels for the strong seasonal demand Thanksgiving through Christmas. We can expect price increases this year, but the increase maybe dampened by increased cheese production, relatively high stock levels and possibly some set back in food service if the surge in cases of the Delta virus and mask mandates make consumers more reluctant to eating out and attending public events. The latest dairy product report showed July production of American cheese up 2.3% from a year ago and total cheese production up 3.5%. July 31st Stock levels show American cheese up 4.2% from a year ago and total cheese up 4.1%.

Cheese sales should remain strong and higher than a year ago. With more eating out rather than home prepared meals beverage milk sales for July were 6.3% lower than a year ago with year-to-date sales 5.3% lower. Butter sales may also not be as high as butter sales were strong a year ago with more home prepared meals.

Dairy exports have been a positive factor for milk prices and is expected to continue for the remainder of the year. U.S. dairy product prices remain price competitive to other major exporters. Milk production amongst other major exporters is expected to be no more than 1% higher than a year ago. July U.S. export volume on a milk solids equivalent basis was 7% higher than a year ago, the sixth straight monthly increase. Increased exports to China and Mexico lead the way. Nonfat dry milk/skim milk powder exports were 3.1% lower due to reduced sales to Southeast Asia which may be partially explained by continued congestion at California ports. But whey product exports were up 17.8%, cheese exports up 26.8%, and butterfat exports up 86.1%.

As of now it seems reasonable that Class III could be something like \$16.60 for September, \$17.25 for October and peaking around \$17.60 for November and falling back to \$17.40 for December. Current Class III futures are not this high being in the low \$17's October through December. Class IV could be in the high \$16's to low \$17's September through December. If milk production slows down more than expected and domestic sales are higher along with strong exports prices could end up higher.

Pricing High Moisture Corn for Farm to Farm Sales

This chart is also available as an excel file(or word document) on the Marinette County Extension website, at <https://marinette.extension.wisc.edu/crops-and-soils-resources/copy-of-hmc-pricing-2021-2/> or you can email me at sreuss@marinettecounty.com or scott.reuss@wisc.edu and request that I send it to you.

Please note my comment about combining cost. The prices in this spreadsheet are for combined corn. If the buyer is the one paying for combining or doing it themselves, those costs should be deducted from the price per ton.

The best aspect of conducting farm to farm sales of HMC or any other commodity is that both farms can benefit economically when done correctly. The seller can net more than if they sold it through commercial channels, and the buyer pays less than they would have to buy feed through commercial channels. That said, it is always a good idea to put together a simple contract to make sure that both parties understand the terms of the sale and to have timing, methods, who does what, and anything else on paper so problems can be averted.

Dec. Futures \$5.17, Local Cash Bid \$4.72, as of 09/21/21

Combining at \$40/acre over 160 bushels = \$0.25/bushel If buyer is paying combining cost, needs to be subtracted from purchase price.
at 35.71429 bu/ton, \$9.00 combining cost per ton

Interior numbers are price/ton, using 56 lbs/bushel and 15.5% moisture as base bushel equivalency

corn price per bu	Corn moisture %											
	16	17	18	19	20	21	22	23	24	25	26	27
\$4.00	\$142.01	\$140.32	\$138.63	\$136.94	\$135.25	\$133.56	\$131.87	\$130.18	\$128.49	\$126.80	\$125.11	\$123.42
\$4.10	\$145.56	\$143.83	\$142.10	\$140.36	\$138.63	\$136.90	\$135.16	\$133.43	\$131.70	\$129.97	\$128.23	\$126.50
\$4.20	\$149.11	\$147.34	\$145.56	\$143.79	\$142.01	\$140.24	\$138.46	\$136.69	\$134.91	\$133.14	\$131.36	\$129.59
\$4.30	\$152.66	\$150.85	\$149.03	\$147.21	\$145.39	\$143.58	\$141.76	\$139.94	\$138.12	\$136.31	\$134.49	\$132.67
\$4.40	\$156.21	\$154.35	\$152.49	\$150.63	\$148.77	\$146.91	\$145.05	\$143.20	\$141.34	\$139.48	\$137.62	\$135.76
\$4.50	\$159.76	\$157.86	\$155.96	\$154.06	\$152.16	\$150.25	\$148.35	\$146.45	\$144.55	\$142.65	\$140.74	\$138.84
\$4.60	\$163.31	\$161.37	\$159.43	\$157.48	\$155.54	\$153.59	\$151.65	\$149.70	\$147.76	\$145.82	\$143.87	\$141.93
\$4.70	\$166.86	\$164.88	\$162.89	\$160.90	\$158.92	\$156.93	\$154.95	\$152.96	\$150.97	\$148.99	\$147.00	\$145.01
\$4.80	\$170.41	\$168.39	\$166.36	\$164.33	\$162.30	\$160.27	\$158.24	\$156.21	\$154.18	\$152.16	\$150.13	\$148.10
\$4.90	\$173.96	\$171.89	\$169.82	\$167.75	\$165.68	\$163.61	\$161.54	\$159.47	\$157.40	\$155.33	\$153.25	\$151.18
\$5.00	\$177.51	\$175.40	\$173.29	\$171.17	\$169.06	\$166.95	\$164.84	\$162.72	\$160.61	\$158.50	\$156.38	\$154.27
\$5.10	\$181.07	\$178.91	\$176.75	\$174.60	\$172.44	\$170.29	\$168.13	\$165.98	\$163.82	\$161.67	\$159.51	\$157.35
\$5.20	\$184.62	\$182.42	\$180.22	\$178.02	\$175.82	\$173.63	\$171.43	\$169.23	\$167.03	\$164.84	\$162.64	\$160.44
\$5.30	\$188.17	\$185.93	\$183.69	\$181.45	\$179.21	\$176.97	\$174.73	\$172.49	\$170.25	\$168.01	\$165.77	\$163.52
\$5.40	\$191.72	\$189.43	\$187.15	\$184.87	\$182.59	\$180.30	\$178.02	\$175.74	\$173.46	\$171.17	\$168.89	\$166.61

Note: Buying/selling on a per acre basis can be done, but it is more likely that price will favor one party, due to estimation of yield.

corn price per bu	Corn moisture %												
	28	29	30	31	32	33	34	35	36	37	38	39	40
\$4.00	\$121.72	\$120.03	\$118.34	\$116.65	\$114.96	\$113.27	\$111.58	\$109.89	\$108.20	\$106.51	\$104.82	\$103.13	\$101.44
\$4.10	\$124.77	\$123.03	\$121.30	\$119.57	\$117.84	\$116.10	\$114.37	\$112.64	\$110.90	\$109.17	\$107.44	\$105.71	\$103.97
\$4.20	\$127.81	\$126.04	\$124.26	\$122.49	\$120.71	\$118.93	\$117.16	\$115.38	\$113.61	\$111.83	\$110.06	\$108.28	\$106.51
\$4.30	\$130.85	\$129.04	\$127.22	\$125.40	\$123.58	\$121.77	\$119.95	\$118.13	\$116.31	\$114.50	\$112.68	\$110.86	\$109.04
\$4.40	\$133.90	\$132.04	\$130.18	\$128.32	\$126.46	\$124.60	\$122.74	\$120.88	\$119.02	\$117.16	\$115.30	\$113.44	\$111.58
\$4.50	\$136.94	\$135.04	\$133.14	\$131.23	\$129.33	\$127.43	\$125.53	\$123.63	\$121.72	\$119.82	\$117.92	\$116.02	\$114.12
\$4.60	\$139.98	\$138.04	\$136.09	\$134.15	\$132.21	\$130.26	\$128.32	\$126.37	\$124.43	\$122.49	\$120.54	\$118.60	\$116.65
\$4.70	\$143.03	\$141.04	\$139.05	\$137.07	\$135.08	\$133.09	\$131.11	\$129.12	\$127.13	\$125.15	\$123.16	\$121.17	\$119.19
\$4.80	\$146.07	\$144.04	\$142.01	\$139.98	\$137.95	\$135.93	\$133.90	\$131.87	\$129.84	\$127.81	\$125.78	\$123.75	\$121.72
\$4.90	\$149.11	\$147.04	\$144.97	\$142.90	\$140.83	\$138.76	\$136.69	\$134.62	\$132.54	\$130.47	\$128.40	\$126.33	\$124.26
\$5.00	\$152.16	\$150.04	\$147.93	\$145.82	\$143.70	\$141.59	\$139.48	\$137.36	\$135.25	\$133.14	\$131.02	\$128.91	\$126.80
\$5.10	\$155.20	\$153.04	\$150.89	\$148.73	\$146.58	\$144.42	\$142.27	\$140.11	\$137.95	\$135.80	\$133.64	\$131.49	\$129.33
\$5.20	\$158.24	\$156.04	\$153.85	\$151.65	\$149.45	\$147.25	\$145.05	\$142.86	\$140.66	\$138.46	\$136.26	\$134.07	\$131.87
\$5.30	\$161.28	\$159.04	\$156.80	\$154.56	\$152.32	\$150.08	\$147.84	\$145.60	\$143.36	\$141.12	\$138.88	\$136.64	\$134.40
\$5.40	\$164.33	\$162.05	\$159.76	\$157.48	\$155.20	\$152.92	\$150.63	\$148.35	\$146.07	\$143.79	\$141.50	\$139.22	\$136.94

Grant-writing Workshops for Farmers

Are you interested in trying out a new idea on your farm? Have you thought about applying for a grant but weren't sure where to start? On Wednesday, October 6th and Thursday, October 7th UW-Madison Extension will host a 2-part webinar to introduce farmers and agricultural professionals to grant opportunities in agriculture.

On October 6th Margaret Krome from the Michael Fields Agricultural Institute will cover basic principles of grant-writing, including how to design a sound project, when applying for a grant does or does not make sense, and how to find potential funding sources.

On October 7th a panel of grant program staff from USDA's Sustainable Agriculture Research and Education Program and Wisconsin Department of Agriculture's Buy Local Buy Wisconsin, Wisconsin Producer-led Watersheds, and Specialty Crop Block Grant programs, and a farmer who has successfully applied for grants will cover some of the ins and outs of applying for those and other grants.

Both webinars will start at noon. Following the presentations participants are welcome to ask extensive questions of the presenters. Participants will also have the opportunity to review a sample grant application. Potential grant applicants are encouraged to attend both sessions. Pre-registration is required (email Scott and he can send you this link) at <https://uwmadison.zoom.us/meeting/register/tJEpc--hqzgsGtRV1-F1u7VfnPPOZiMzRJRb>

Beef Producers – Please share your thoughts!

Extension's Livestock Program Area needs beef producer input to shape future beef programming. An anonymous survey was developed to gather this input - it is 13 questions long and has a mix of multiple choice and short-response question so we can learn more about Wisconsin beef producers along with future industry challenges and opportunities. Scan the QR code here to get to the link, or email Scott at scott.reuss@wisc.edu and he can send you the direct link. The



survey will close on October 1.

Also, if you need to go through the Beef Quality Assurance certification training, a local training session will be conducted at the Pound Town Hall on Wednesday, December 1st, starting at 5:30 p.m. Full information will be in next newsletter or is available through the WI Cattlemen's Association and other sources now.

Wisconsin Waterhemp Herbicide Resistance Monitoring

There have been complaints regarding lack of performance of **dicamba** (XtendiMax, Engenia, Status), **2,4-D** (Enlist One) and/or **glufosinate** (Liberty) on POST control of waterhemp in corn and soybean fields in Wisconsin.

Wisconsin farms and agronomists are being asked to collect waterhemp seeds this fall from their row crop production fields where one of these three herbicides failed to provide effective POST control and submit them to UW-Madison for herbicide resistance screenings. There is no cost associated to the herbicide resistance screening. The only cost will be your time to collect the seed samples and mail them. You can also contact Scott Reuss and he may be able to conduct the seed collection and get them to the Weed Science Lab for testing.

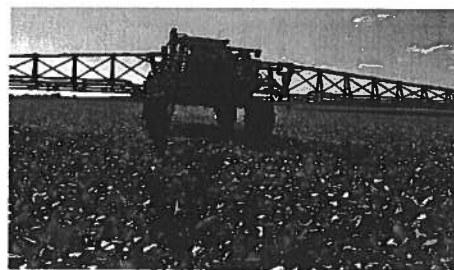
All submitted waterhemp samples will be screened in the greenhouse for resistance to 2,4-D, dicamba and glufosinate.

See the WiscWeeds blog post for complete information: <https://www.wiscweeds.info/post/2021-wisconsin-waterhemp-herbicide-resistance-project-2-4-d-dicamba-and-glufosinate/>

The Wisconsin Soybean Marketing Board and the Take Action Program are supporting this project.

Soybean Foliar Applied Products & Corn Nitrogen Rates/Products: Two-part Field Day Event

Thursday, October 14



Part 1 - 10:00 to 11:15 a.m.

Soybean Foliar Applied Fertilizer and Biological Products Demo Plot

Located at intersection of Larmey Lane & Hogsback Road, 0.5 miles north of Cty WW on Hogsback Road
or 2 miles south of Cty M on Town Line/Hogsback Road

Part 2 - 11:15 a.m. to 12:30 p.m.

Corn Nitrogen Product and Rate Research Plots

Located 0.8 miles south of Cty M on Town Line Road.

Host Farm: Aaron Behnke

Discussion and Plot Tours:

- Soybean Foliar Fertilizer Product Plots
 - o What products have an effect on yield, timing of application, options of combining with insecticide or fungicide applications, other factors
- Soybean population and other agronomics impacting yield and pest management
- Corn Nitrogen Management - Corn N rate and Envita™ plots
 - o Do new N enhancement products work? What rates are best in our area?
- Corn & Soy Management Question and Answer Session

Discussion topics led/facilitated by:

- + Emma Matcham, Graduate Research Assistant & CCA, UW-Madison Soybean Program
- + Scott Reuss, Marinette & Oconto Counties' Agriculture Agent, UW-Madison, Div of Extension
- + Jamie Patton, Sr. Outreach Specialist, UW-Madison, Nutrient & Pest Management Program

Free to attend, Pre-registration not required

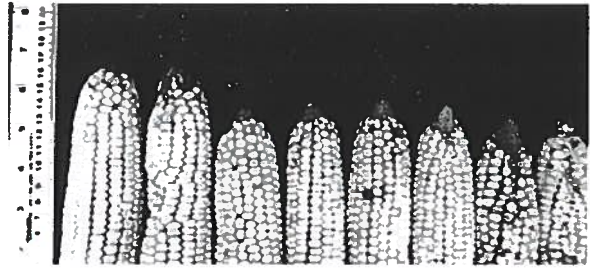
Contact Scott Reuss with any questions, at 715-732-7510 or scott.reuss@wisc.edu



Extension
UNIVERSITY OF WISCONSIN-MADISON

An EEO/AA employer, University of Wisconsin-Madison, Division of Extension provides equal opportunities in employment and programming, including Title VI, Title IX, and the Americans with Disabilities Act (ADA) requirements. If you will need accommodation or assistance as you attend this event, please contact the Marinette office, at 715-732-7510, as soon as possible prior to the event.

Corn Fertilization & Hybrid Selection Field Day



Extension
UNIVERSITY OF WISCONSIN-MADISON

Tuesday, October 26, 10 a.m. to Noon

Intersection of Wildlife Ln & Louisa Rd, 1.5 miles north of Crivitz, WI on Louisa Rd
Host: Dudkiewicz Farms

Discussion Topics and Plot Tours:

Selecting Hybrids for Your Farm: What Should I Look For?

Hybrid and Nitrogen Rate Plots

Nitrogen Fertilization: Selecting Rates, Timing, and Products

Starter Fertilizers: What is Best?

Tillage Practice Impacts on Nutrient Management

Corn Management Question and Answer Session

Discussion Topics and Plot Tour order to be decided day of event.

Discussion topics led/facilitated by:

- Scott Reuss, Agriculture Agent, UW-Madison, Division of Extension, Marinette and Oconto Counties
- Jamie Patton, Sr. Outreach Specialist, UW-Madison NPM Program
- Pioneer and Country Visions personnel
- Joe and Ashley Dudkiewicz, Host Farmers

Field day is free, pre-registration not required

Contact Scott Reuss with any questions, 715-732-7510 or scott.reuss@wisc.edu